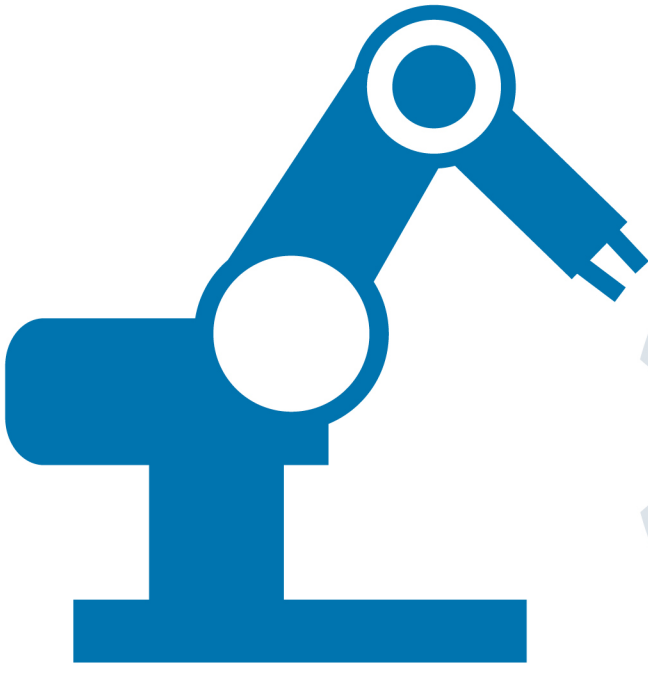


INVESTING IN AMERICA

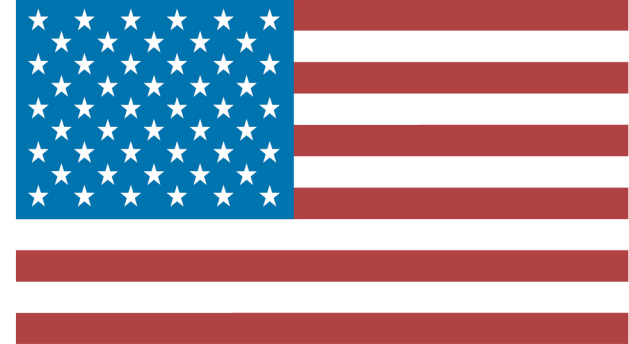
Annual Contributions Report | 2015-2016



JAPANESE AUTOMAKERS
DIRECTLY EMPLOYED

88,384

MANUFACTURING, HQ/SALES,
AND R&D/DESIGN CENTER
EMPLOYEES IN 2014.



AS OF 2014,
JAMA MEMBERS'
MANUFACTURING PLANTS
HAVE CUMULATIVELY
INVESTED

\$43 BILLION



IN THE U.S. ECONOMY

IN THE U. S. IN 2014, JAPANESE AUTOMAKERS BUILT MORE THAN

3.8
MILLION
VEHICLES

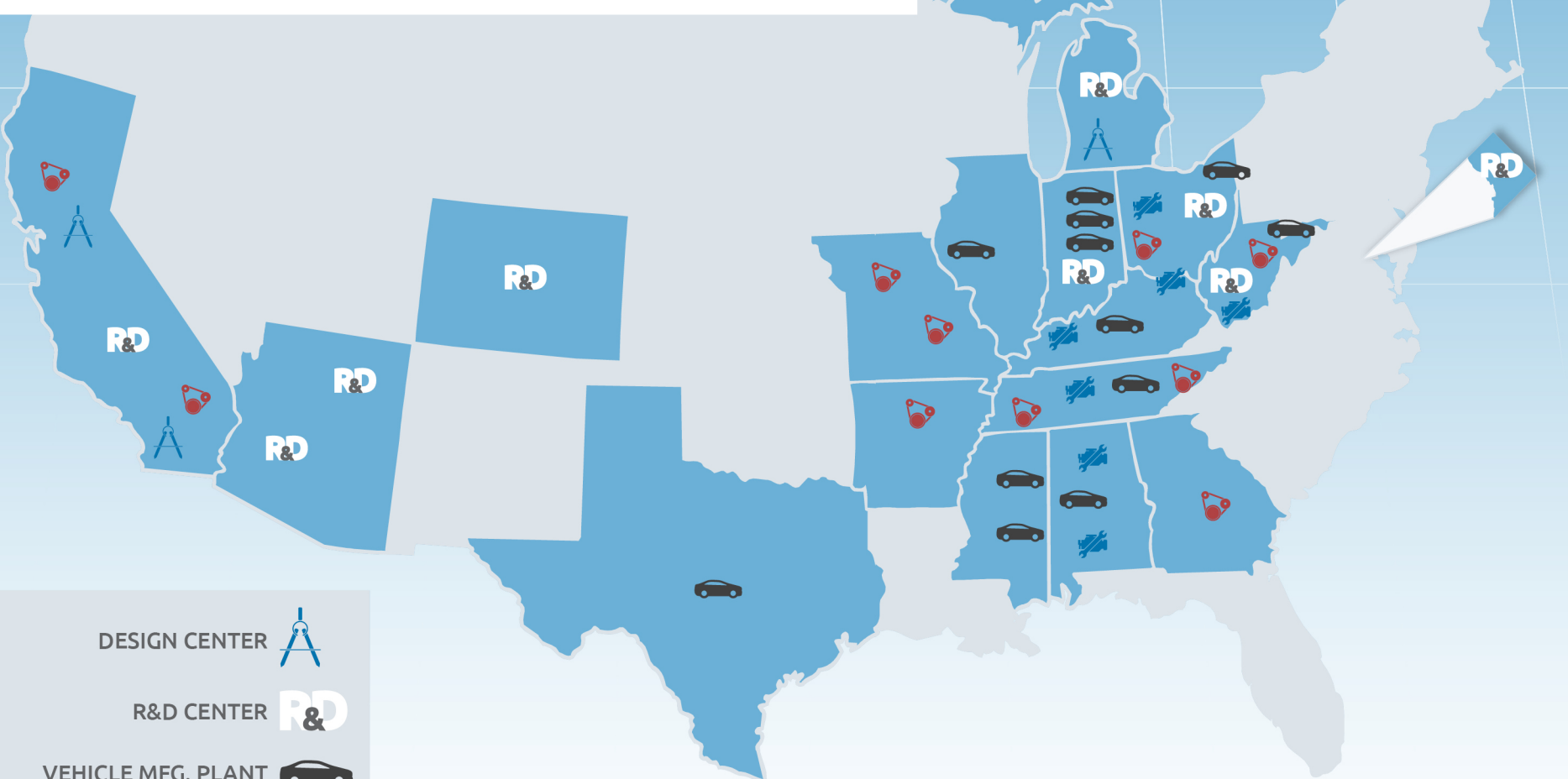


&

4.3
MILLION
ENGINES

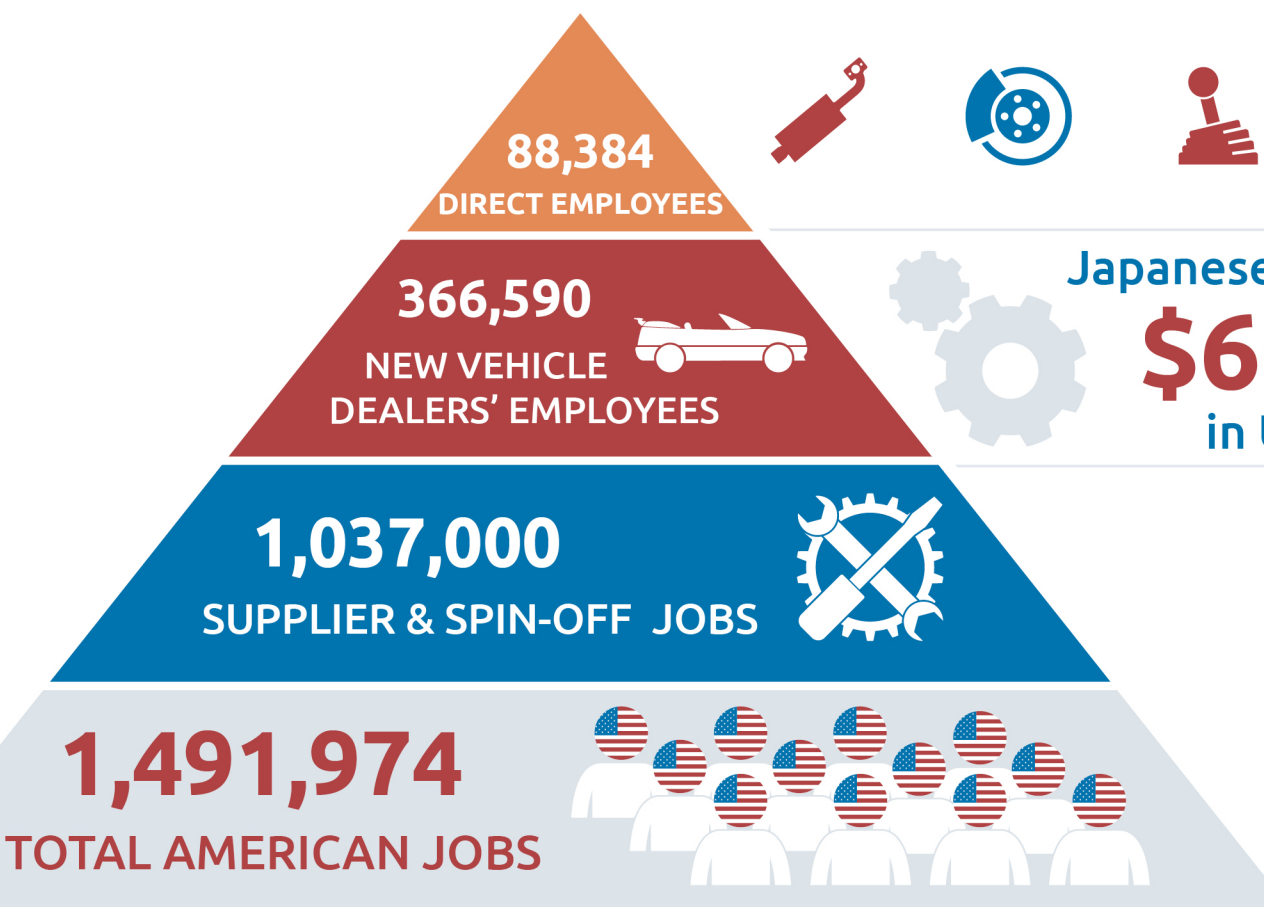


Japanese automakers operate **26 MANUFACTURING PLANTS** & **34 R&D FACILITIES** in **16 STATES & DC**

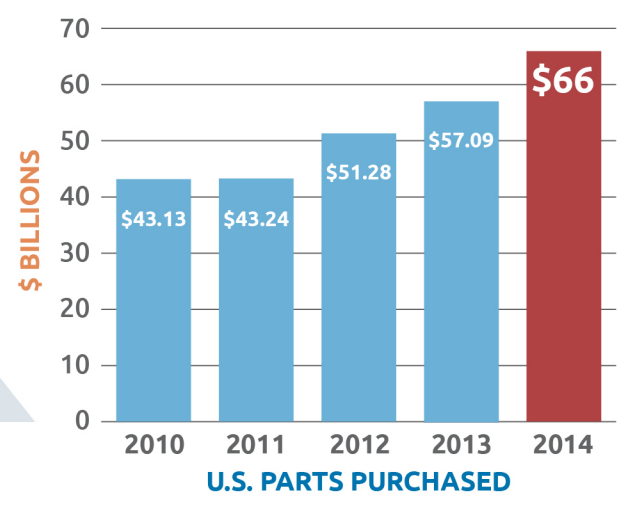


- DESIGN CENTER
- R&D CENTER
- VEHICLE MFG. PLANT
- PARTS MFG. PLANT
- ENGINE MFG. PLANT

CALIFORNIA | ARIZONA | TEXAS | COLORADO | MISSOURI | ALABAMA
ARKANSAS | GEORGIA | LOUISIANA | TENNESSEE | KENTUCKY | OHIO
WEST VIRGINIA | DISTRICT OF COLUMBIA | MICHIGAN | ILLINOIS | INDIANA



Japanese Automakers Purchased
\$66 Billion
in U.S. Automotive Parts



74%

OF JAPANESE-BRAND
VEHICLES SOLD IN THE
U.S. ARE BUILT IN
NORTH AMERICA

